

# M2M CAPTURE

Be the best inspector you can be



Streamlined PAUT software for  
M2M Gekko®, Mantis™, and PC.

# ADVANCED PHASED ARRAY ULTRASONICS MADE SIMPLE

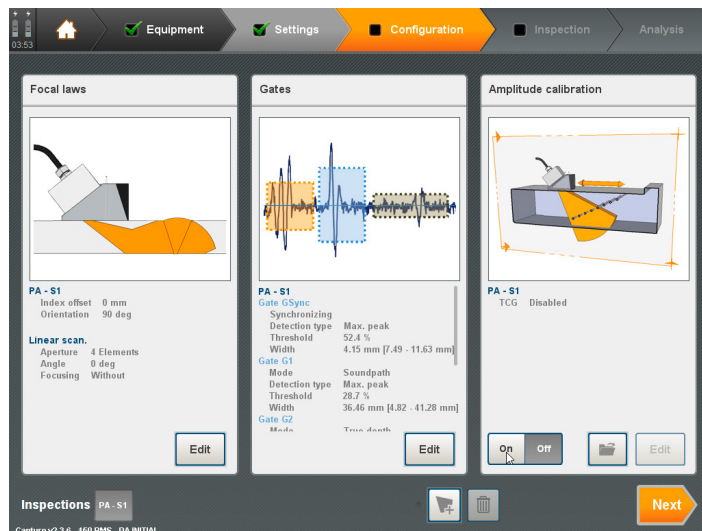
Capture™ is the streamlined software embedded in M2M Gekko® and Mantis™ portable flow detectors, and also available for PC.

## Intuitive and Efficient Workflow

Benefiting from over 6-years in the field experience with TFM, Capture offers the fastest code-compliant TFM on the market.

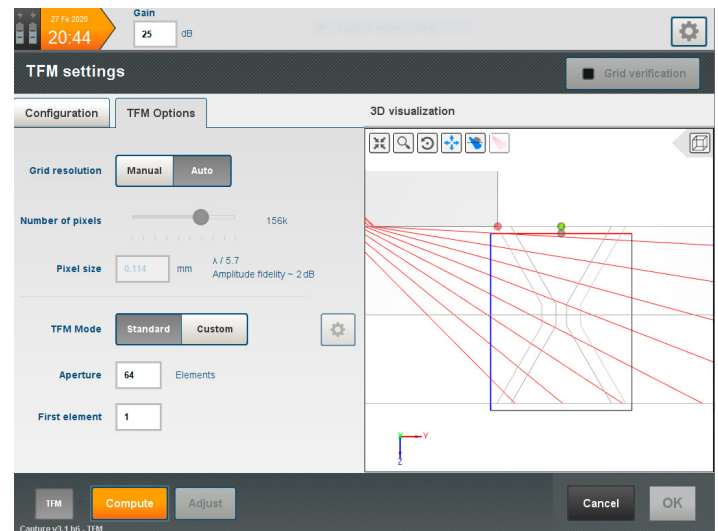
Capture software covers all your inspection needs from application design to inspection and reporting. Designed for all levels of phased-array inspectors, Capture requires minimum training and is a quick and easy way to improve knowledge.

- Application templates with step by step application design
- Comprehensive probe, wedge, and scanner libraries
- Fast and intuitive calibration wizards
- Onboard focal law calculator for probe configurations
- Customizable inspection report



## Complete TFM toolbox

- High-resolution real-time TFM up to 250k pixels and up to 128 elements
- Scan speed up to 140 images/s with 64 elements for typical weld inspection (1in WT)
- Compatible with linear, matrix, DLA and DMA probes and all calibration wizards including advanced TCG
- Unique grid verification tool compliant with ASME-V/ISO-DIS-23865 codes
- Elementary FMC and PWI transmission modes
- All TFM computation paths (direct, indirect, converted modes)
- Full Matrix Capture (FMC) recording



## FEATURES

- Intuitive and efficient workflow
- Code-compliant TFM at industrial scan speed
- Dedicated solutions for complex geometries
- One software covering all your PAUT/TOFD inspection
- Advanced analysis simplified
- Continuous innovation driven by market applications

## Unique 3-click Calibration Wizards

In addition to complete scan plans for all techniques, smart 3-click calibration wizards will help you work smarter:

- Part and wedge velocity
- Amplitude balancing and dead element check
- Best-in-class wedge delay and angle calibration including AOD/COD wedges
- Innovative and advanced TCG calibration

Wedge verification and TCG are essential calibration steps that have historically been complicated and time consuming. Capture does it accurately, quickly and easily.

# EFFICIENT WORKFLOW WITH ENHANCED DATA QUALITY

Dedicated to conventional Ultrasonic Testing (UT), Phased Array UT (PAUT), Time-of-Flight-Diffraction (TOFD), Total Focusing Method (TFM) and Adaptive Total Focusing Method (ATFM).

## Advanced Solutions

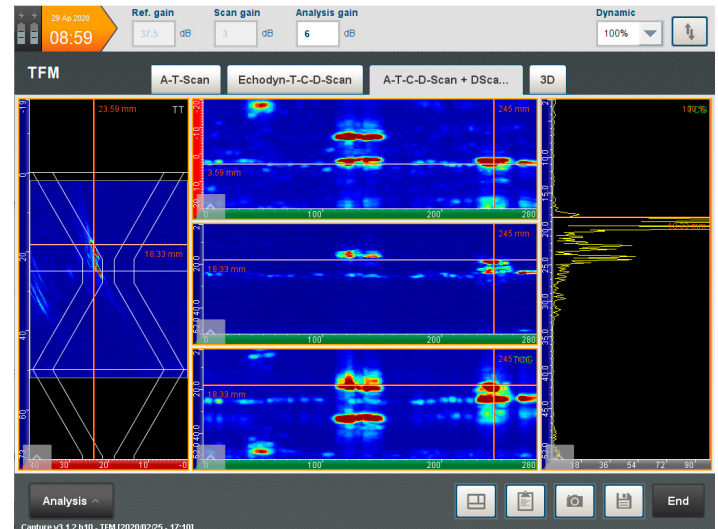
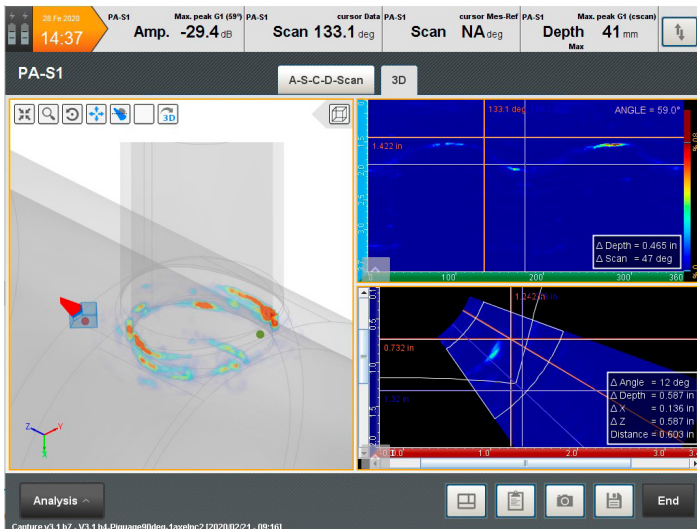
Improved Probability-Of-Detection (POD), better and faster defect characterization for simple and more complex components.

- Nozzle inspection, 3-axis scanner and live cross-section views
- Fillet welds (T, Y) with multi-skip ray tracing and live signal display
- 2.5D CAD overlay import
- Natively compatible with the RMS PA Silverwing scanner
- Custom dual linear (DLA) and dual matrix (DMA) configurations
- Paintbrush 2D mapping with 3-axis rotating arm
- Unique Adaptive (ATFM) solution for wavy surfaces

## Enhanced Data Display and Quality

Better clarity leads to better efficiency, Capture offers a set of tools for all techniques including TFM that improves data display such as:

- A-B-C-D-Scan, Top and Side views, and echodynamics
- Real-time 3D view and component overlay display
- Live missed data information
- Interface echo straightening for corrosion mapping
- 16bits and 800% amplitude dynamic to prevent saturation
- No compromise on data file size (no limitation, SSD up to 1 TB)
- Tools required to visualize and check data quality



## Advanced Analysis Simplified

- Indication creation from cursors
- Thickness and overlay edition
- Customizable view layouts for all groups
- Off-line gate edition
- Advanced readings banner
- Indication auto-sizing at -XdB (customizable)
- C-Scan stitching
- Advanced reporting tools, customizable indication table
- Data export (pdf and excel)
- Data projection in the 3D view

## Connected Software Platform

Capture is natively embedded in Gekko and Mantis PAUT/TOFD units and provides the same features for PC. Windows based, it offers full connectivity to simplify data management.

- Easy file management and remote control through ethernet/wireless (TightVNC, TeamViewer integrated solutions)
- Multi-sessions Capture PC
- Compatible with CIVA Analysis and Ultis
- API available for data access for 3rd party software
- Easily transfer data to PC or tablet for further analysis.

# CAPTURE VERSIONS

	GO	VIEW	CPN	PRO
<b>Platform:</b>				
Mantis	•			
Gekko	•			
PC		•	•	•
<b>Setup &amp; Inspection</b>				
UT, PAUT, TOFD, TFM, ATFM** techniques	•*		•	•
Plate, Pipe with weld overlay and HAZ	•		•	•
Advanced geometries (nozzle, fillet weld, CAD import)	•*		•	•
Scan plan with multiskip ray & signal display	•		•	•
TFM toolbox (FMC, PWI, grid verification tool, TCG...)	•*		•	•
Multigroup settings	•*		•	•
3-click cal. wizards for all techniques	•			
data acquisition up to 3 encoded axis	•*			
FMC data recording	•*			
<b>Data analysis</b>				
Readings banner & indication table	•	•	•	•
Cursor position	•	•	•	•
Zoom & Full screen	•	•	•	•
A-Scan, B-Scan, C-Scan, D-Scan, E-Scan, S-Scan, T-Scan views, echodyn	•	•	•	•
Top view, side view, 3D view	•		•	•
Customizable layout edition	•		•	•
Offline gate & thickness edition	•		•	•
TOFD tools (WD, LW straightening and removal)	•		•	•
Defect auto-sizing (-XdB)	•			•
C-Scan stitching and data merging	•			•
3D data rendering	•			•

\* According to the Package

\*\* Add-on module sold separately